

VISUAL DIRECTORY OF KENTUCKY HORSESHOE PITCHERS - D



DALTON, MIKE
ACTIVE
OWINGSVILLE



DALTON, TED
INACTIVE/RETIRED
DAYTON



DANIEL, JOE
(1973-2012)
RUSSELLVILLE



DANIEL, FRANK
(1891-1977)
NEWPORT



DANIEL, NORMAN
(1923-2005)
NEWPORT



DARNELL, JIM
(1912-1976)
BELLEVUE



DAUGHTERY, PETE
(1928-2000)
INDEPENDENCE



DAVIDSON, DAN
INACTIVE/RETIRED
LAGRANGE

VISUAL DIRECTORY OF KENTUCKY HORSESHOE PITCHERS - D



DAVIS, LARRY
ACTIVE
LOUISVILLE



DENNEY, CLINTON
ACTIVE
EUBANK



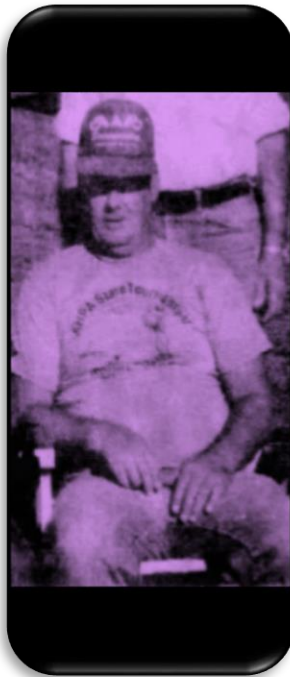
DENNIS, BOB
(1919-2003)
INDEPENDENCE



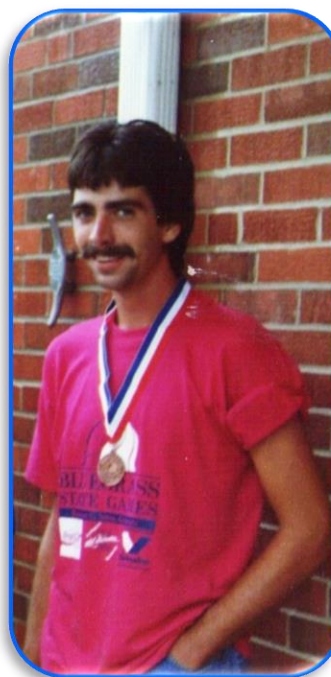
DENNIS, RONNIE
INACTIVE/RETIRED
BIG CLIFTY



DENTON, TRUMAN
INACTIVE/RETIRED
OWINGSVILLE



DERRY, JIM
(1944-2016)
WAYNESBURG



DEVARY, RICKY
INACTIVE/RETIRED
SHELBYVILLE



DISHMAN, JODY
INACTIVE/RETIRED
MONTICELLO

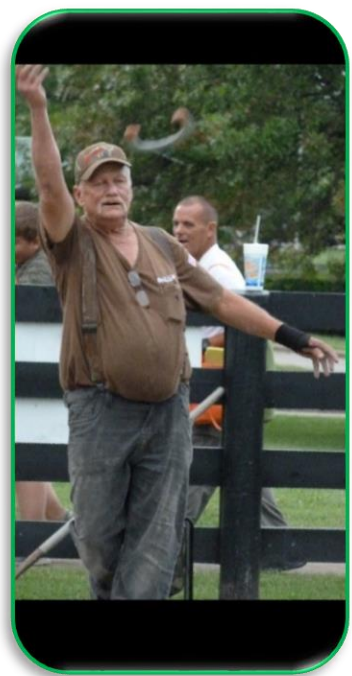
VISUAL DIRECTORY OF KENTUCKY HORSESHOE PITCHERS - D



DOANE, BUFORD
INACTIVE/RETIRED
DRY RIDGE



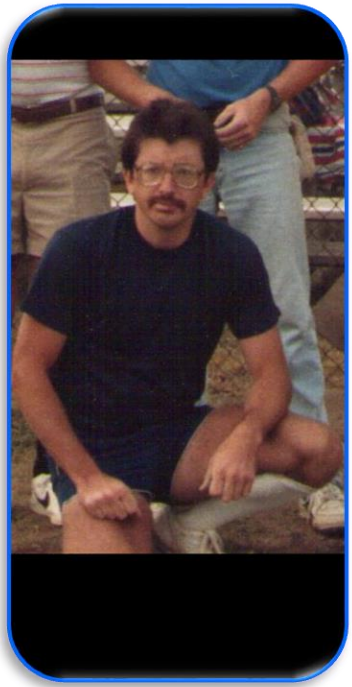
DONAHUE, JOHNNIE
(1922-2002)
MT. STERLING



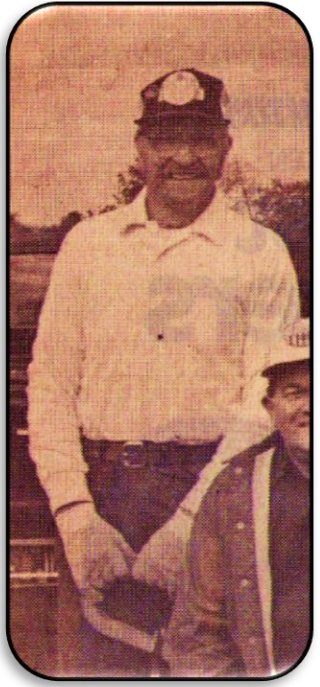
DOUGLAS, PHIL
ACTIVE
BOWLING GREEN



DOWNS, BENNIE
(1933-2001)
BARDSTOWN



DOWDELL, MIKE
INACTIVE/RETIRED
ELIZABETHTOWN



DRANE, WILLARD
(1930-2002)
LOUISVILLE



DUCKWORTH, WILBERT
(1916-1996)
FORT THOMAS



DUNCAN, MITCH
ACTIVE
INDEPENDENCE

VISUAL DIRECTORY OF KENTUCKY HORSESHOE PITCHERS - D



DUNIGAN, RUSS
(1934-2013)
VANCEBURG



DUNLAP, CHIDLEY
(1911-1995)
MIDWAY



DURBIN, VIRGIL
INACTIVE/RETIRED
BARDSTOWN



DURRETT, MAXIE
(1918-2007)
SULPHER WELL